



INDOFINE Chemical Company, Inc.

121 Stryker Lane, Bldg. 30, Suite 1 • Hillsborough, NJ 08844 • U.S.A.

Phone: (908) 359-6778 • FAX: (908) 359-1179

website: www.indofinechemical.com

e-mail: chemical@indofinechemical.com

CERTIFICATE OF ANALYSIS

Catalog Number: 19-050

Product Name: **6-CHLORO-4(4'-CHLOROPHENYL)-3-PHENYLCOUMARIN**

Lot Number: 98091

Chemical Formula: C₂₁H₁₂Cl₂O₂

Molecular Weight: 367.23

Melting Point: 182-184°C

Appearance: Off white powder

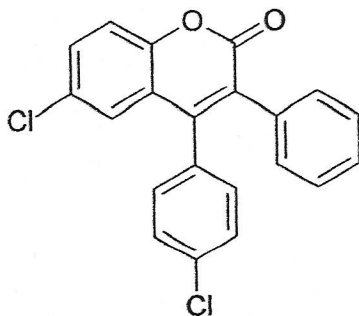
Solubility: Soluble in Chloroform

TLC: Hexane:Ethyl acetate (9:1)

NMR Spectrum: Enclosed (Confirms to the structure)

Storage: Cool dry place

Purity (HPLC): 99.18%





INDOFINE Chemical Company, Inc.

121 Stryker Lane, Bldg. 30, Suite 1 • Hillsborough, NJ 08844 • U.S.A.

Phone: (908) 359-6778 • FAX: (908) 359-1179

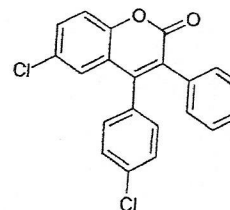
website: www.indofinechemical.com

e-mail: chemical@indofinechemical.com

HPLC ANALYSIS

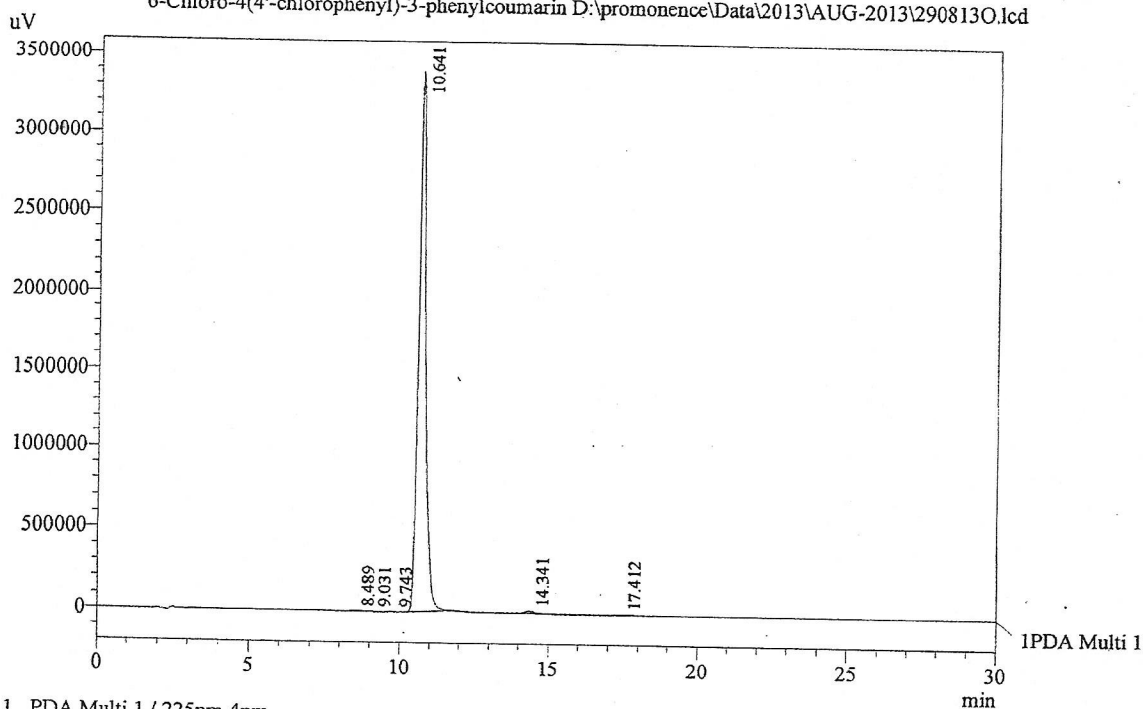
Acquired by : Sanjeev
Sample Name : 6-Chloro-4(4'-chlorophenyl)-3-phenylcoumarin
Sample ID : Lot No: 98091
Injection Volume : 20 uL
Data Filename : 290813O.lcd
Method Filename : Linear Isocratic.M.lcm

Catalog No.: 19-050
Product Name: 6-Chloro-4(4'-chlorophenyl)-3-phenylcoumarin
Lot No.: 98091



Column : LUNA C-18(2), (250mm x4.6mm 5.0µ)
Flow : 1.000 mL/min.
Mobile Phase : A(20% of 0.05% TFA in water) B(80% of Acetonitrile)
Diluent : Acetonitrile

Chromatogram
6-Chloro-4(4'-chlorophenyl)-3-phenylcoumarin D:\promonence\Data\2013\AUG-2013\290813O.lcd



1 PDA Multi 1 / 225nm 4nm

PeakTable

PDA Ch1 225nm 4nm

Peak#	Name	Ret. Time	Area	Area %	Relative Retention Time
1	RT:8.489	8.489	15311	0.03	0.80
2	RT:9.031	9.031	5873	0.01	0.85
3	RT:9.743	9.743	6411	0.01	0.92
4	RT:10.641	10.641	56741976	99.18	1.00
5	RT:14.341	14.341	387670	0.68	1.35
6	RT:17.412	17.412	53873	0.09	1.64
Total			57211115	100.00	

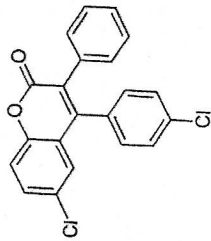


INDOFINE Chemical Company, Inc.
 121 STRYKER LANE
 BLDG. 30, SUITE 1
 HILLSBOROUGH, NJ 08844

Catalog No.: 19-050

Product Name: 6-Chloro-4-(4'-chlorophenyl)-3-phenylcoumarin

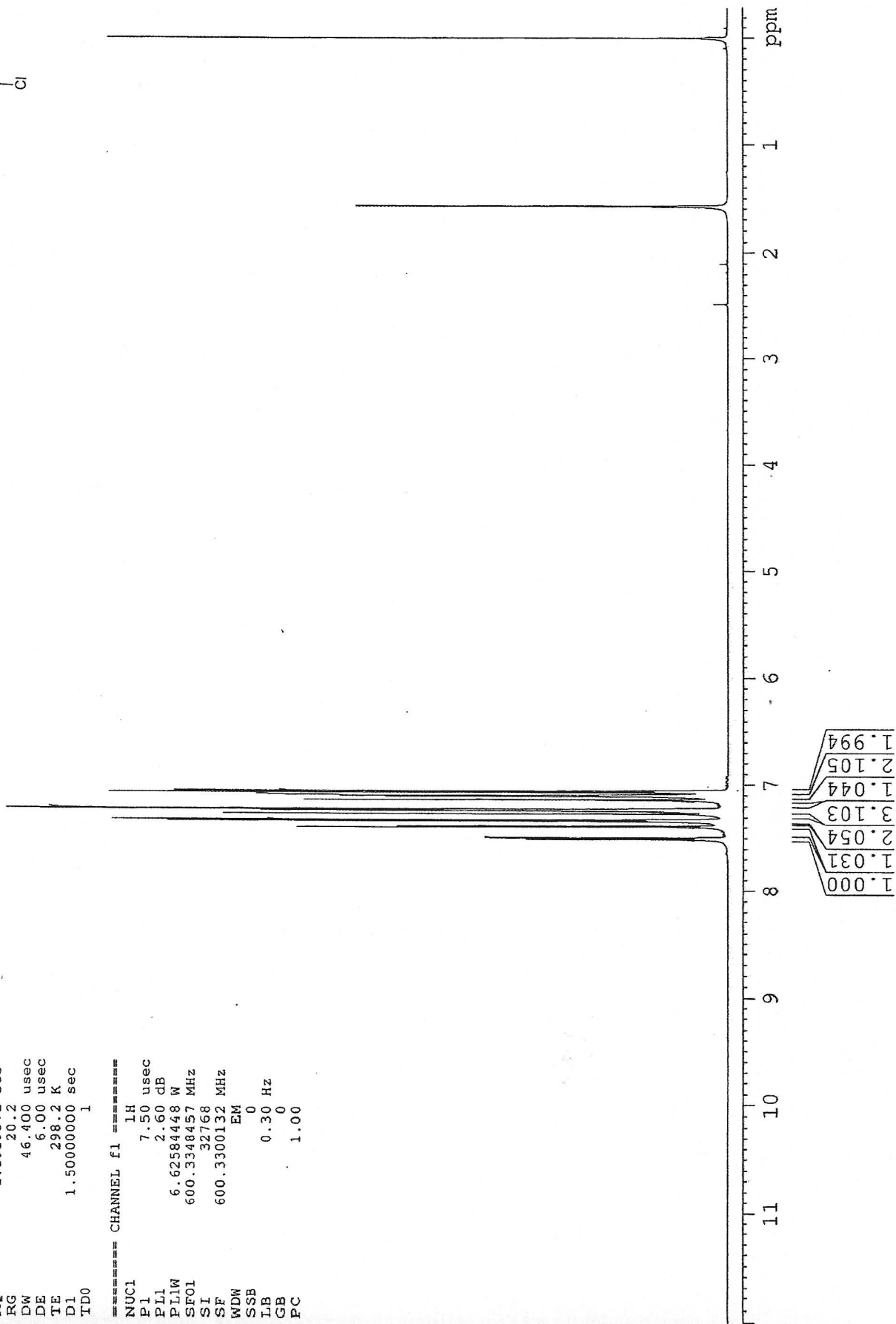
Lot No.: 98091



SOLVENT CDCL3 8
 NS 0
 DS 10775.862 Hz
 SWH 0.359219 Hz
 FIDRES 1.3919572 sec
 AQ 20.2
 RG 46.400 usec
 DW 6.00 usec
 DE 298.2 K
 TE 1.50000000 sec
 DI 1
 TD0 1

1H IN CDCL3
 AVANCE-600

===== CHANNEL f1 =====
 NUC1 1H
 P1 7.50 usec
 PL1 2.60 dB
 PLLW 6.62584448 W
 SF01 600.3348457 MHz
 SI 32768
 SF 600.3300132 MHz
 WDW EM
 SSB 0
 LB 0.30 Hz
 GB 0
 PC 1.00





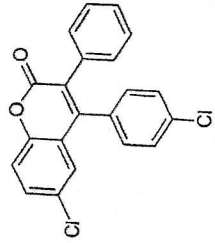
INDOFINE Chemical Company, Inc.

121 STRYKER LANE
BLDG. 30, SUITE 1
HILLSBOROUGH, NJ 08844

Catalog No.: 19-050

Product Name: 6-Chloro-4(4'-chlorophenyl)-3-phenylcoumarin

Lot No.: 98091



1H IN CDCl3
AVANCE-600

SOLVENT CDCl3 8
 NS 0
 DS 0
 SWH 10775.862 Hz
 FIDRES 0.359219 Hz
 AQ 1.3919572 sec
 RG 20.2
 DW 46.400 usec
 DE 6.00 usec
 TE 298.2 K
 D1 1.5000000 sec
 TD0 1

===== CHANNEL f1 =====
 NUC1 1H
 P1 7.50 usec
 PL1 2.60 dB
 P1LW 6.62584448 W
 SF01 600.3348457 MHz
 SI 32768
 SF 600.3300132 MHz
 WDW EM
 SSB 0
 LB 0.30 Hz
 GB 0
 PC 1.00

